

Project Narrative

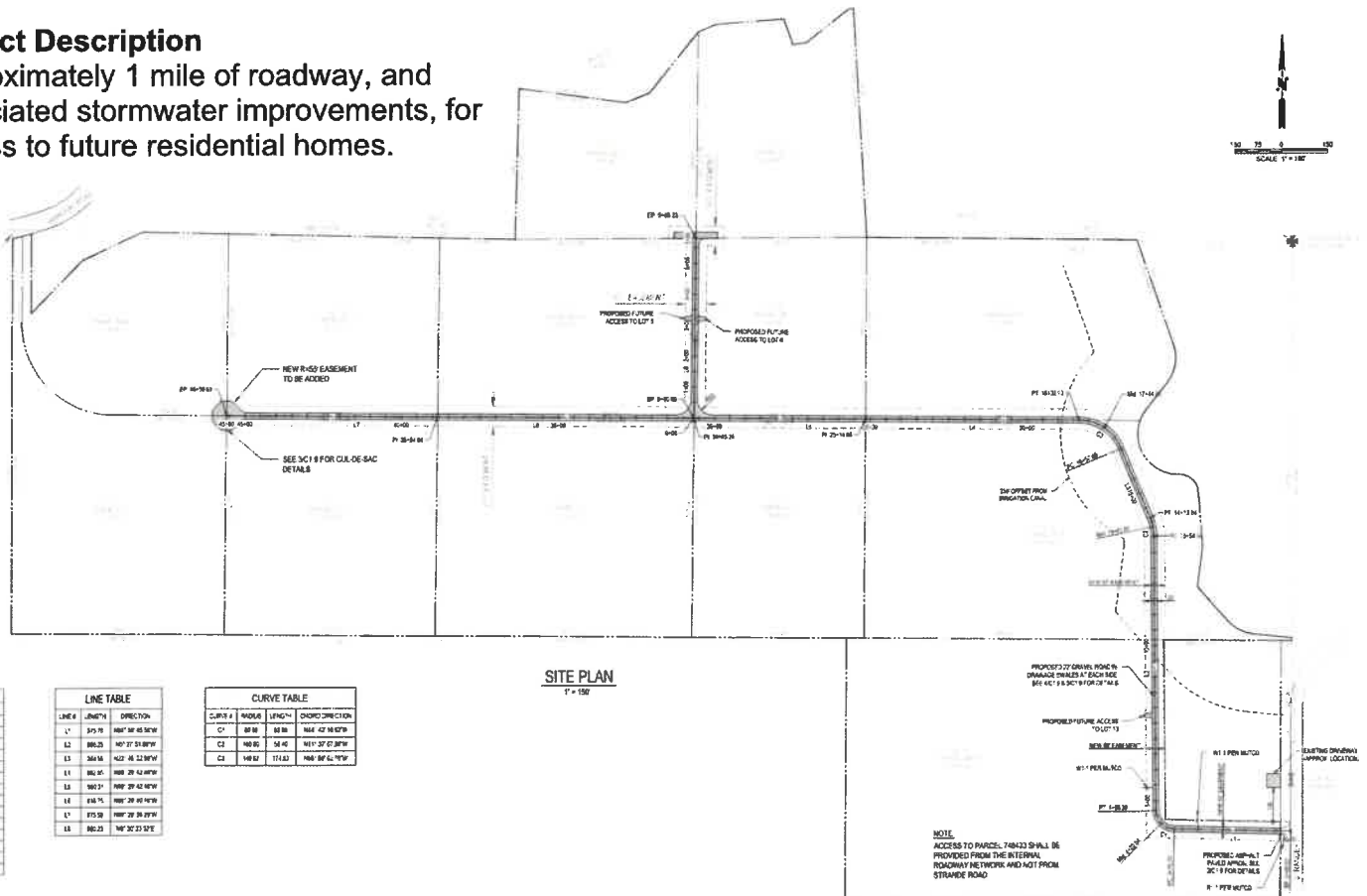
Project Size: 158 acres
Water Supply: Wells
Sewage Disposal: Septic

Project Location



Project Description

Approximately 1 mile of roadway, and associated stormwater improvements, for access to future residential homes.



LOT #	LOT AREA, AC.
1	0.46
2	0.94
3	7.40
4	0.93
5	10.51
6	7.00
7	12.91
8	10.63
9	10.07
10	13.28
11	0.88
12	17.07
13	10.12
TOTAL	158.00

LINE #	LENGTH	DIRECTION
L1	375.79	N89°30'45.94"W
L2	880.25	N07°37'51.80"W
L3	584.16	N22°46'22.80"W
L4	180.95	N88°29'42.80"W
L5	180.21	N88°29'42.80"W
L6	118.74	N88°29'42.80"W
L7	175.58	N88°29'42.80"W
L8	182.23	N47°32'23.52"E

CURVE #	RADIUS	LENGTH	CHORD BEARING
C1	28.16	88.16	N62°42'18.07"W
C2	140.80	52.40	N17°37'07.80"W
C3	140.82	114.82	N48°59'42.19"E

NOTE:
ACCESS TO PARCELS, TANKS & WELLS SHALL BE PROVIDED FROM THE INTERNAL ROADWAY NETWORK AND NOT FROM STRANDE ROAD

PROPOSED 27" GRAVEL POND IN DAMAGE PHASES AT EACH SIDE SEE 412.18.300-8100.07.16.6

PROPOSED FUTURE ACCESS TO LOT 13

NEW EASEMENT

8" PER BLOCK

1" PER BLOCK

PROPOSED 18" DIA. 1" GRAVEL POND IN DAMAGE PHASES AT EACH SIDE SEE 412.18.300-8100.07.16.6

R = 1" PER BLOCK

EXISTING DRAINAGE APPROX. LOCATION